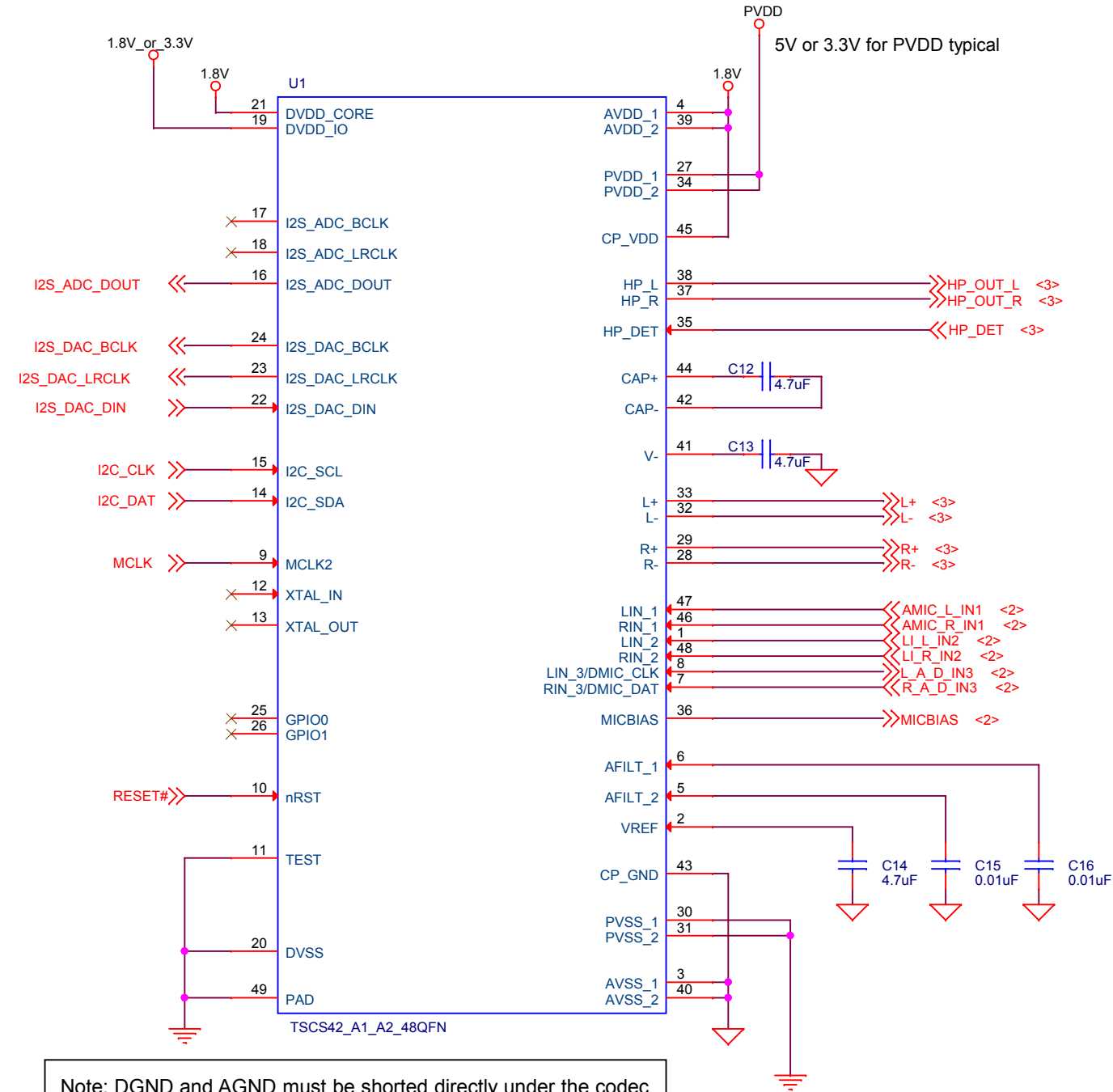


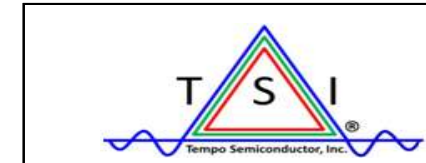
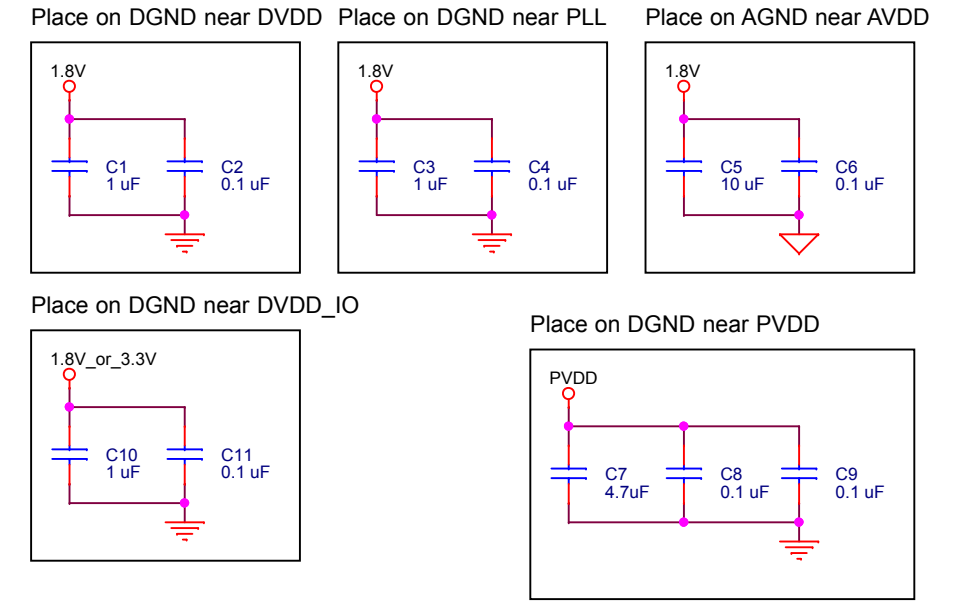
Reference Schematics

TSCS42x

48-pin QFN Package

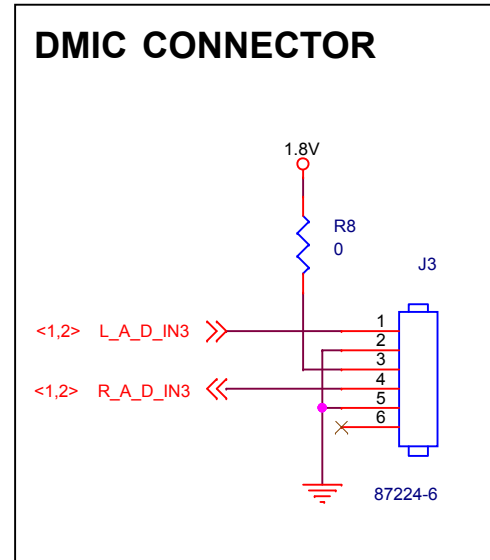
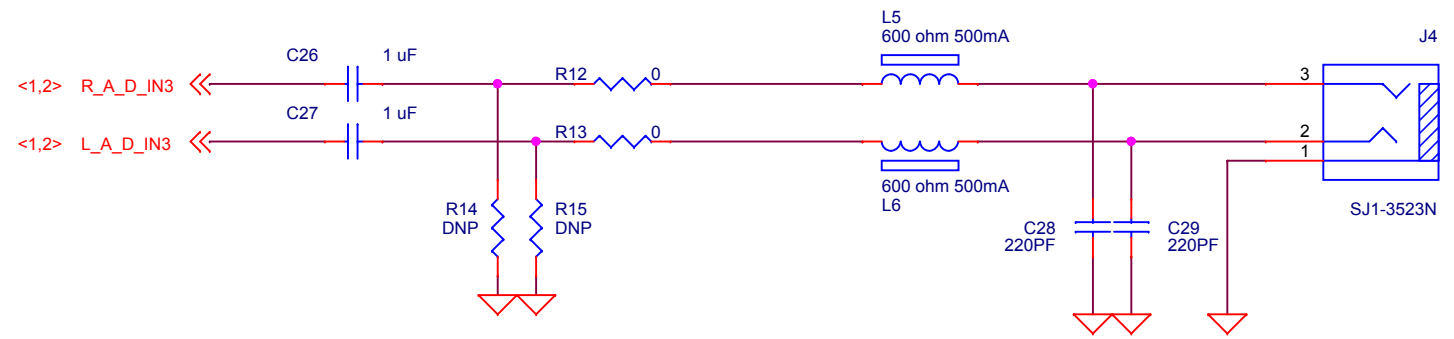
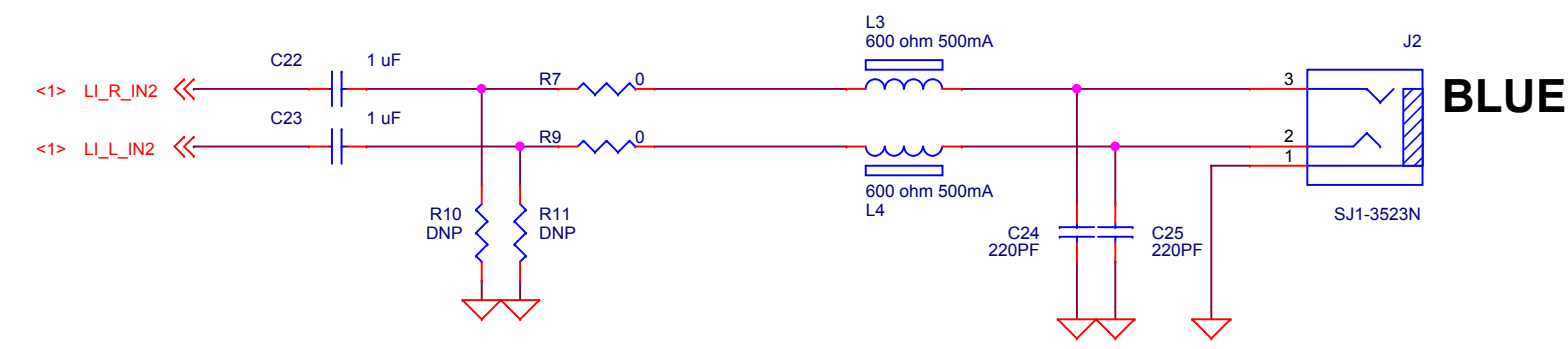
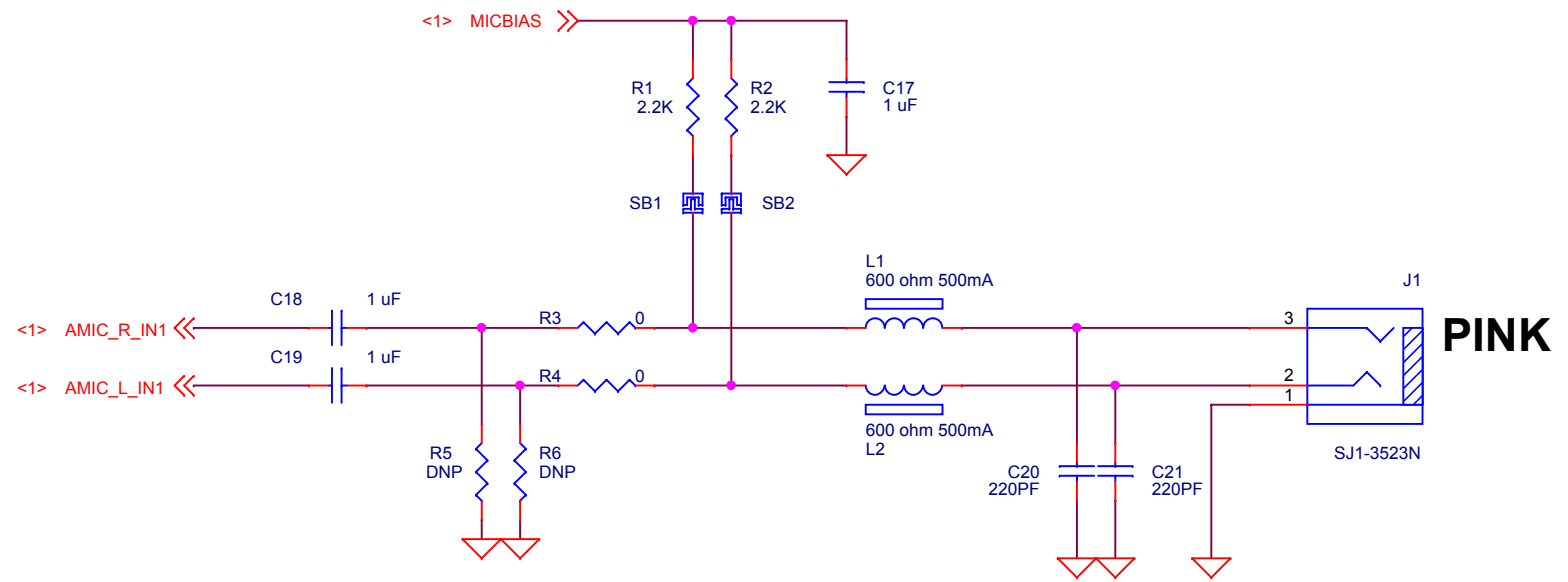


Note: DGND and AGND must be shorted directly under the codec on the internal GND plane with a 20mil copper shunt.




Tempo Semiconductor, Inc.
 8627 N. Mopac Expy.
 Suite 130
 Austin, TX 78759
 tel: (512) 827-3440
 fax: (512) 318-2478

Title TSCS42x Reference Schematics			Consumer Audio
Size Custom B	Rev B	Document Number TSCS42x Codec	
Date: Wednesday, January 18, 2017			Sheet 1 of 3



**Note: Input 3 must be either an analog or DMIC input, but NOT BOTH. The package option of the TSCS42x codec determines the type. For example:
 TSCS42A1x - use the analog input
 TSCS42A2x - use the DMIC input**

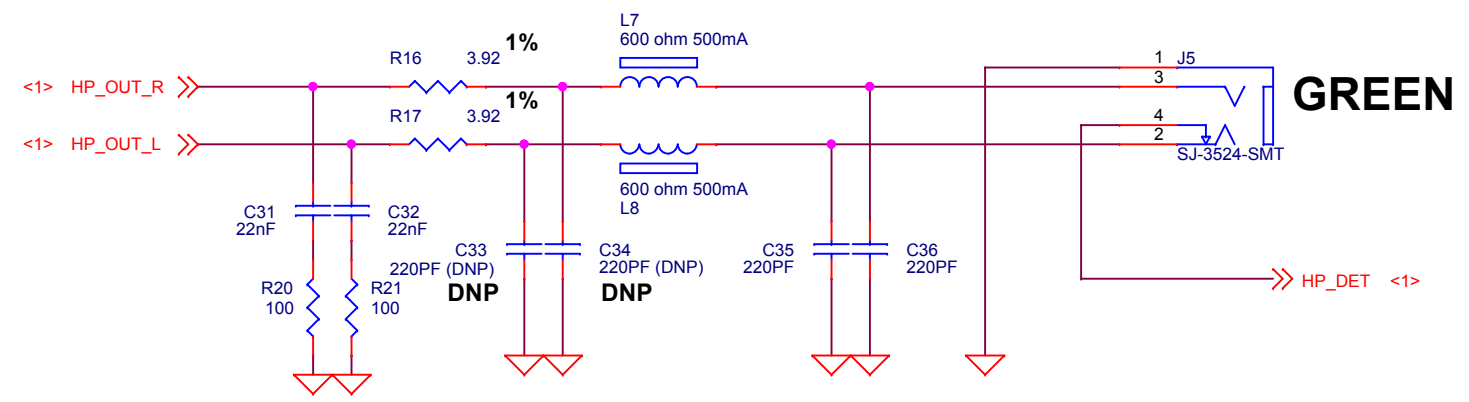


Tempo Semiconductor, Inc.

Tempo Semiconductor, Inc.
 8627 N. Mopac Expy.
 Suite 130
 Austin, TX 78759
 tel: (512) 827-3440
 fax: (512) 318-2478

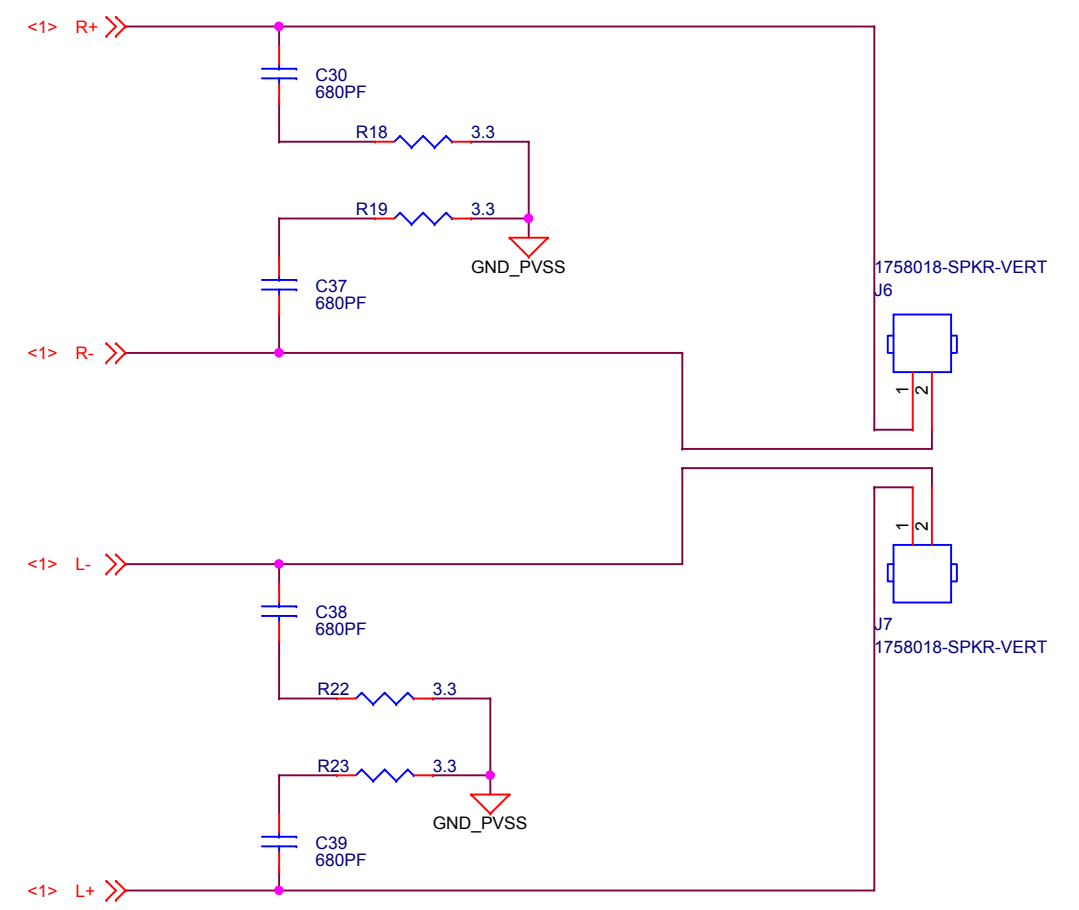
Title TSCS42x Reference Schematics		
Size Custom B	Rev B	Document Number Audio Input Jacks
Date: Wednesday, January 18, 2017		Consumer Audio Sheet 2 of 3

Headphone



Class D BTL Output

Note: BTL can be MONO ONLY when properly configured with register settings. On mono configurations, the right channel is not present and should not be routed or placed.



Tempo Semiconductor, Inc.
 8627 N. Mopac Expy.
 Suite 130
 Austin, TX 78759
 tel: (512) 827-3440
 fax: (512) 318-2478

Title TSCS42x Reference Schematics			Consumer Audio
Size Custom B	Rev B	Document Number Audio Outputs	
Date: Wednesday, January 18, 2017			Sheet 3 of 3